

# DECLARATION

## Declaration of Conformity



**Applicant:** ComAp a.s.  
U Uranie 1612/14a  
170 00 Praque 7  
Czech Republic

**Product type:** Controller for Synchronous CHP

Modell:	Bestellnummer:		Software Version:	Version Grid-Code Modul:
	InteliGen 1000	IG31000XBBB IG31000YBBB	2.1.0	V1.3

**Rating:** Supply voltage: 8...36V<sub>dc</sub>  
Measuring AC voltage range: 0...600V<sub>ac, ph-ph</sub>  
Output Voltage: -10...10V<sub>dc</sub> (analogue output)

A representative test sample of above stated model successfully passed partial testing according to (see test overview in annex).

**Standard:** TOR Erzeuger Typ A Version 1.1 (tested according to OVE-Richtlinie R 25 Ausgabe 2020-03-01)

**Report no:** 21PP213-04\_1

**Certificate no:** 22-020-01

**Date of issue:** 2022-02-21

Kiwa Primara GmbH  
Gewerbestraße 28  
87600 Kaufbeuren  
Germany  
Tel. +49 8341 99726-0  
primara@kiwa.com  
www.kiwa.de

Jürgen Seegger





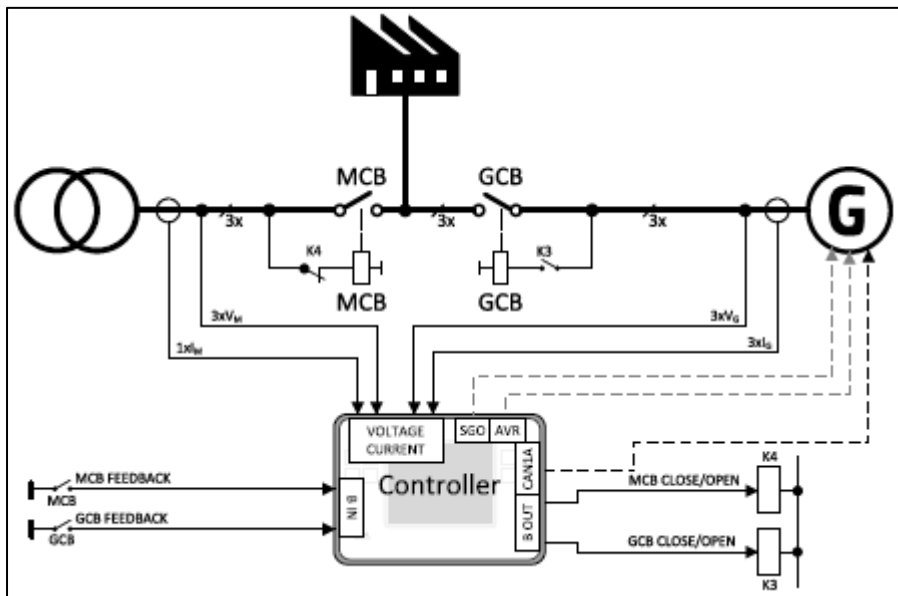
## General product information

The EZE controller IntelliGen 1000 is a controller for genset with synchronous generator applications manufactured by ComAp, a.s., which combine the following functions in one hardware:

- Engine operation/control (start, stop operation)
- Engine protection (oil pressure, water temperature, cylinder temperatures, etc.)
- Generator control (voltage control, active and reactive power control,  $\cos \phi$  control)
- Generator protection (overvoltage, undervoltage, overcurrent, short-circuit current, overload)
- Network voltage monitoring and generator shutdown if network values are outside adjusted limits (voltage and frequency monitoring)

Basically, the structure of the control systems can be divided into two levels. The upper level is responsible for active and reactive power management. Based on the selected mode, the required active and reactive power is made available for the lower level. At the lower level, the speed demand of the engine control unit (SRO) and the voltage demand (VRO) of the generator excitation unit are influenced.

A typical application of a control device is shown in the following figure.

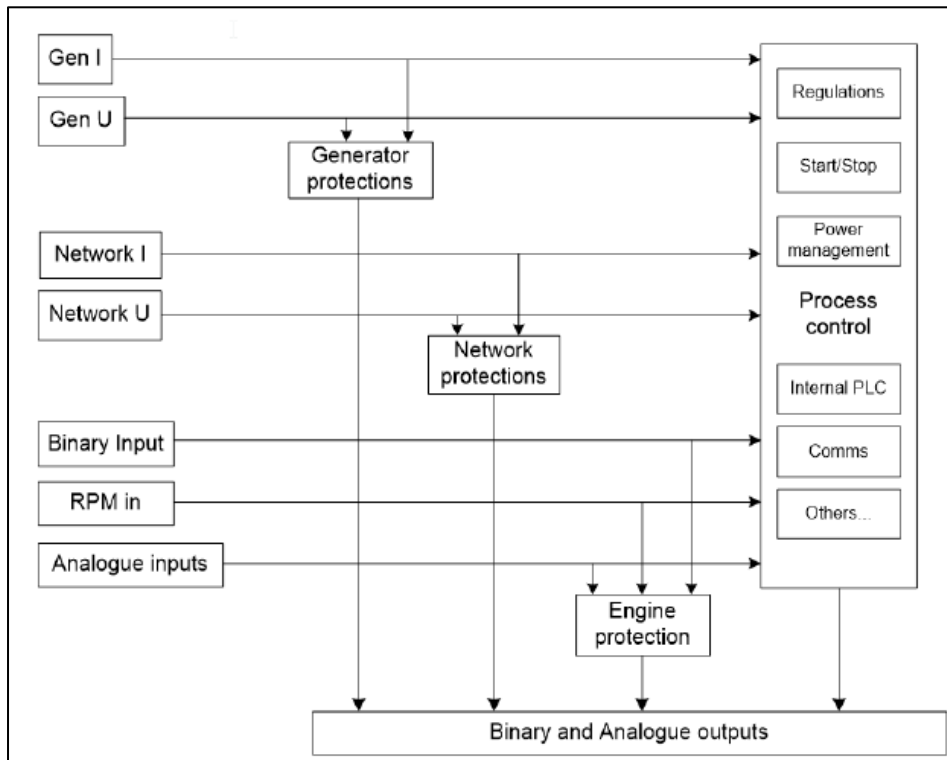


Among other things, it is possible to operate the generator in the stand-alone grid as well as in parallel with the grid.

Only the grid-parallel operating mode was considered in this declaration of conformity.



## Block diagram



## Test overview

The controller was tested with a "starter kit" simulation setup, in which the various feed-back signals were implemented via switches and potentiometers in order to simulate realistic operation. Only the manipulated variables were measured and not their controlled variables. This means that the control loops for active and reactive power were not closed (open loop).

OVE-Richtlinie R 25 Ausgabe 2020-03-01		
Clause	Test	Result
5.3.2	Measurement of active and reactive power range	<b>P</b>
5.3.6	Active power reduction following voltages changes P(U)	<b>P</b>
5.3.9	Reactive power control by setpoint Q fix	<b>P</b>
5.3.10	Voltage dependent control functions Q(U) and P(U)	<b>P</b>